



St. Mary's College (Autonomous)
Reaccredited with 'A+' Grade by NAAC (Cycle IV)
Thoothukudi



Criterion: IV – Infrastructure and Learning Facilities
4.3 IT Infrastructure. Year 2018-2023

4.3.1. Institution frequently updates its IT facilities and provides sufficient band width for internet connection

➤ **Software and Wifi Details**

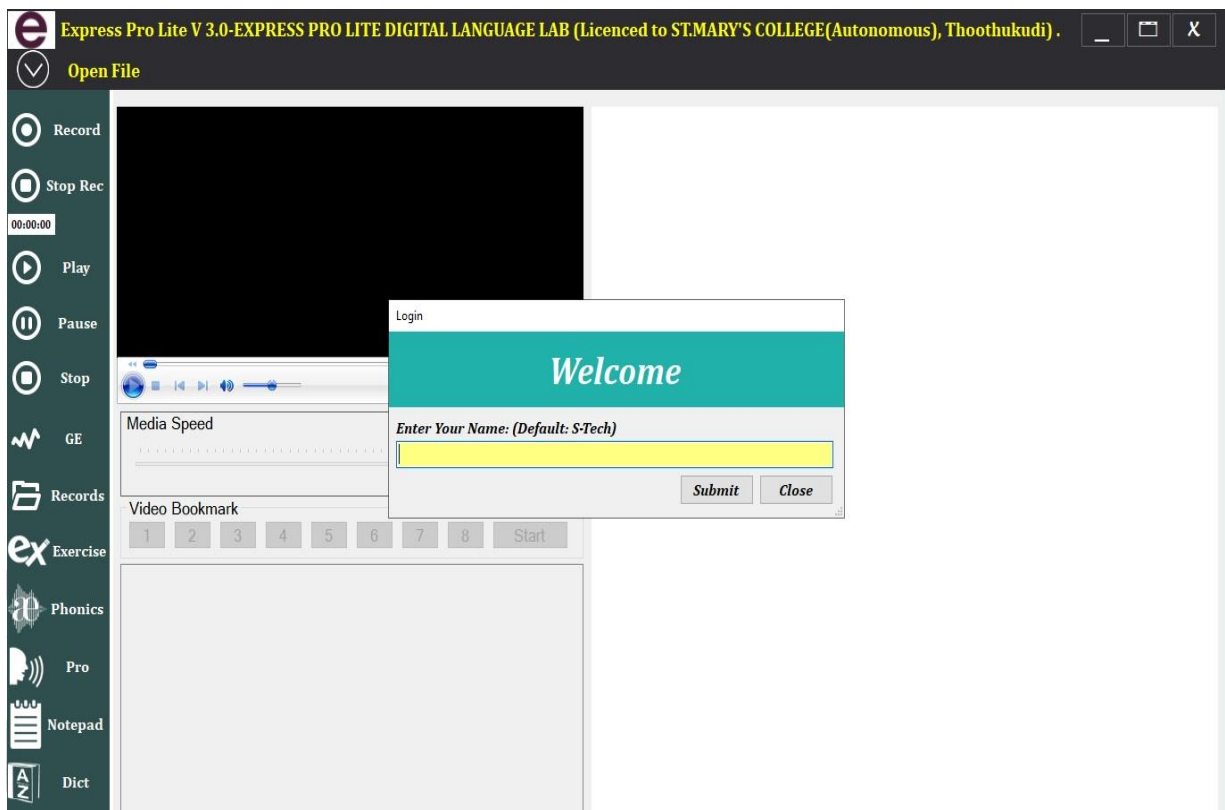
(c). Softwares

| Soft required | Name of the software available |
|----------------------|--------------------------------|
| System Software | 1 Windows XP |
| | 2 Windows 8 |
| | 3 Windows 10 |
| | 4 Windows R2 Server |
| Application software | 2 Ms Office |
| | 3 Turbo C |
| | 4 Adobe Photoshop |
| | 5. Affe Effects |
| | 6. Coreldraw |
| | 7. Adobe Premier |
| | 8. Adobe Dream wiver |
| | 9. Visual Studio 2008 |
| | 10. Adobe pagemaker |
| | 11. Matlab |
| | 12. Office 2003 |
| | 13. VLC Player |
| | 14. DOT NET |

(d) Network connectivity

Bandwidth : YES /50MBPS
Number of nodes with Internet connection : 271

Luis Rose
Signature of the Principal



**Express Pro Lite V 3.0 – Express Pro Lite Digital Language Lab
(Licenced to St. Mary's College (Autonomous), Thoothukudi)**



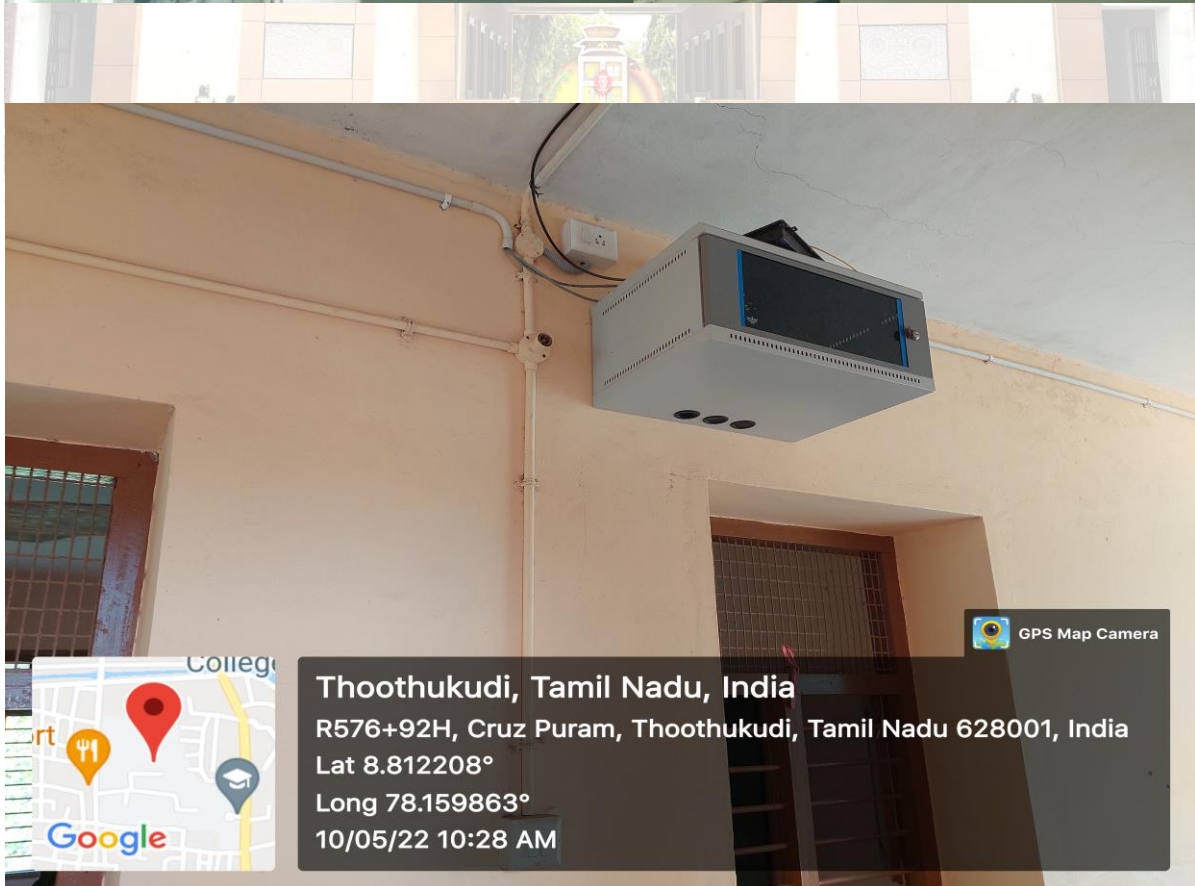
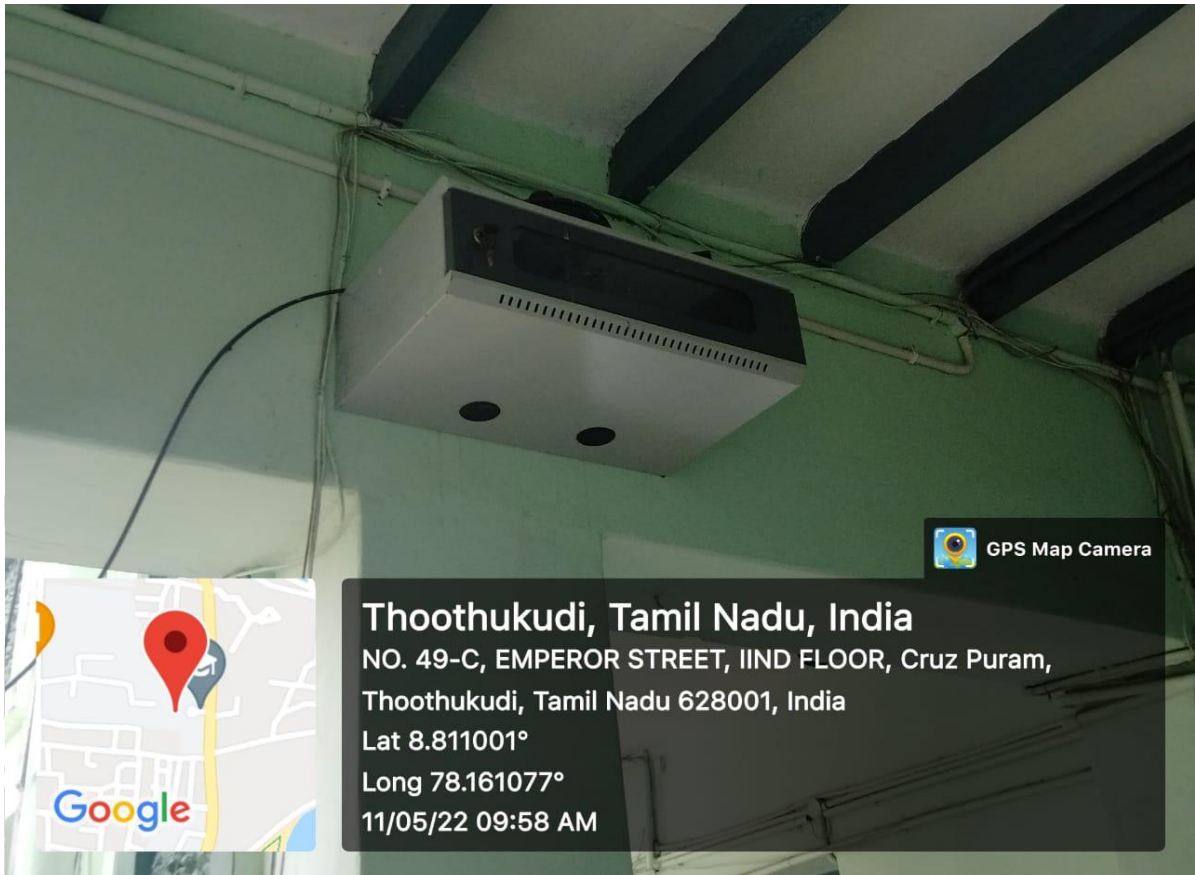
English Language Lab

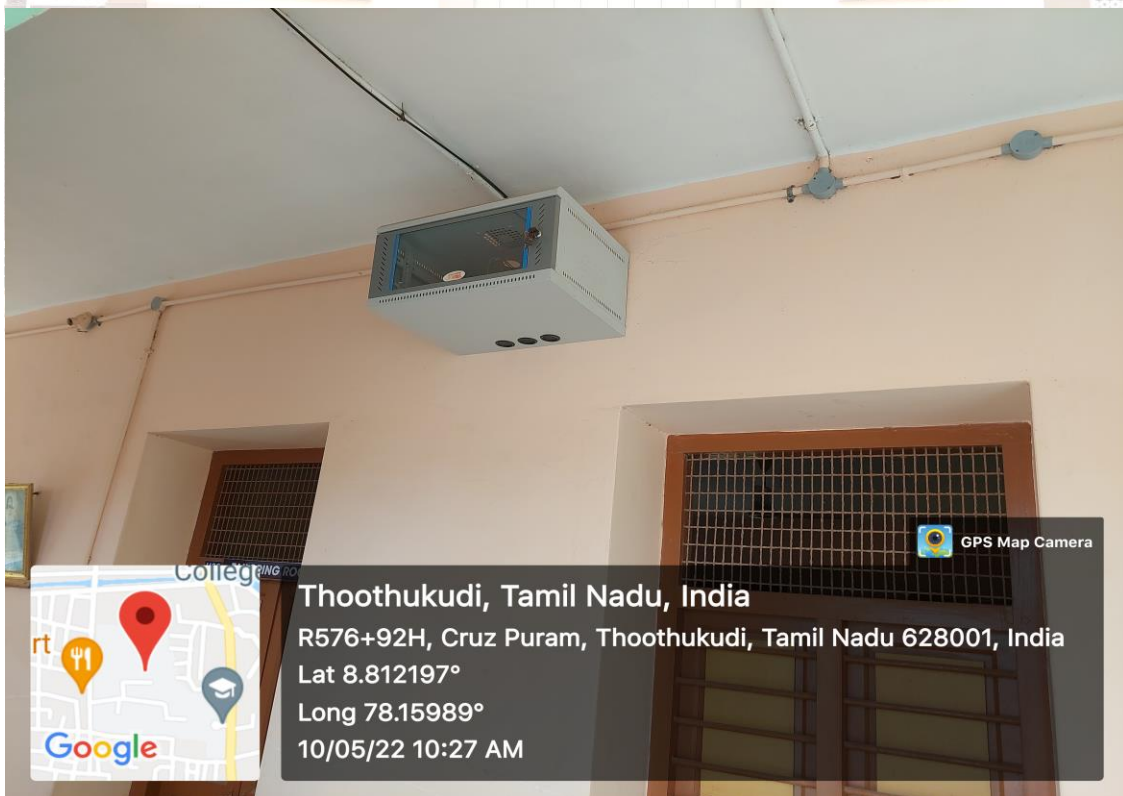
Junction Box for Wifi Facilities



Criterion IV

SSR Cycle V





Louis Rose
Principal
 St. Mary's College (Autonomous)
 Thoothukudi-628 001.