



**St. Mary's College (Autonomous)**  
Reaccredited with 'A+' Grade by NAAC (Cycle IV)  
Thoothukudi



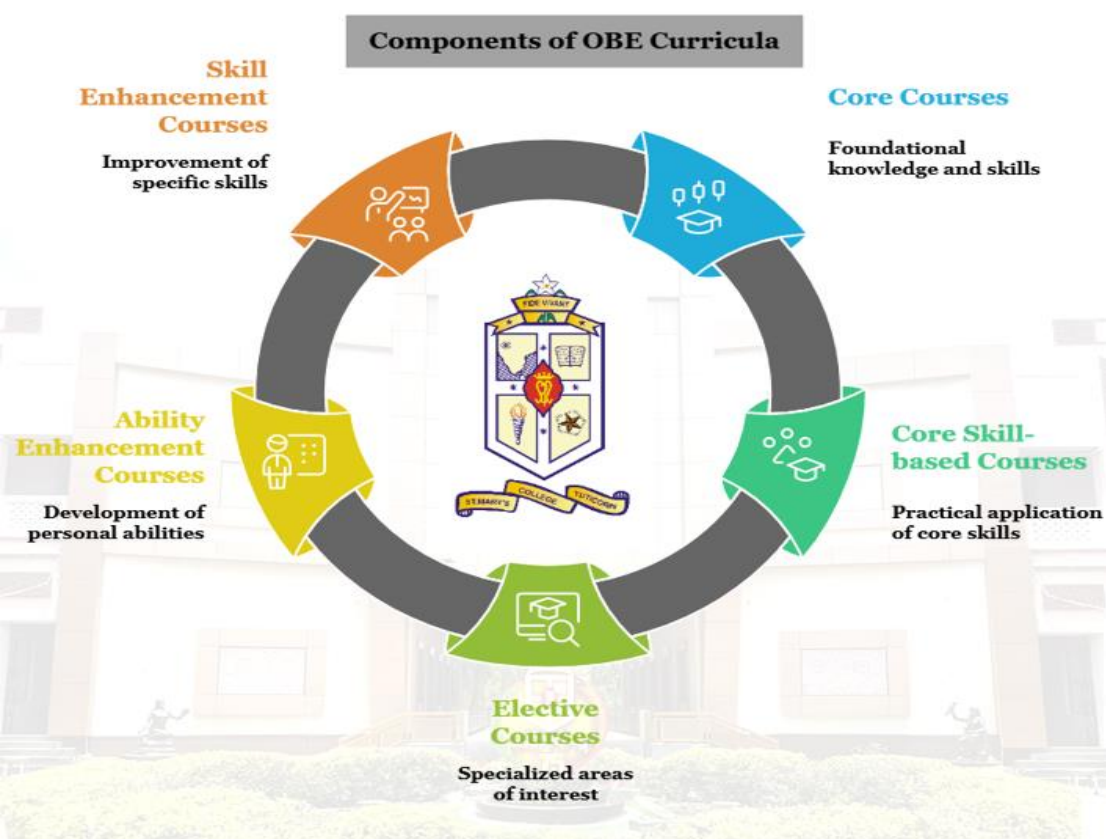
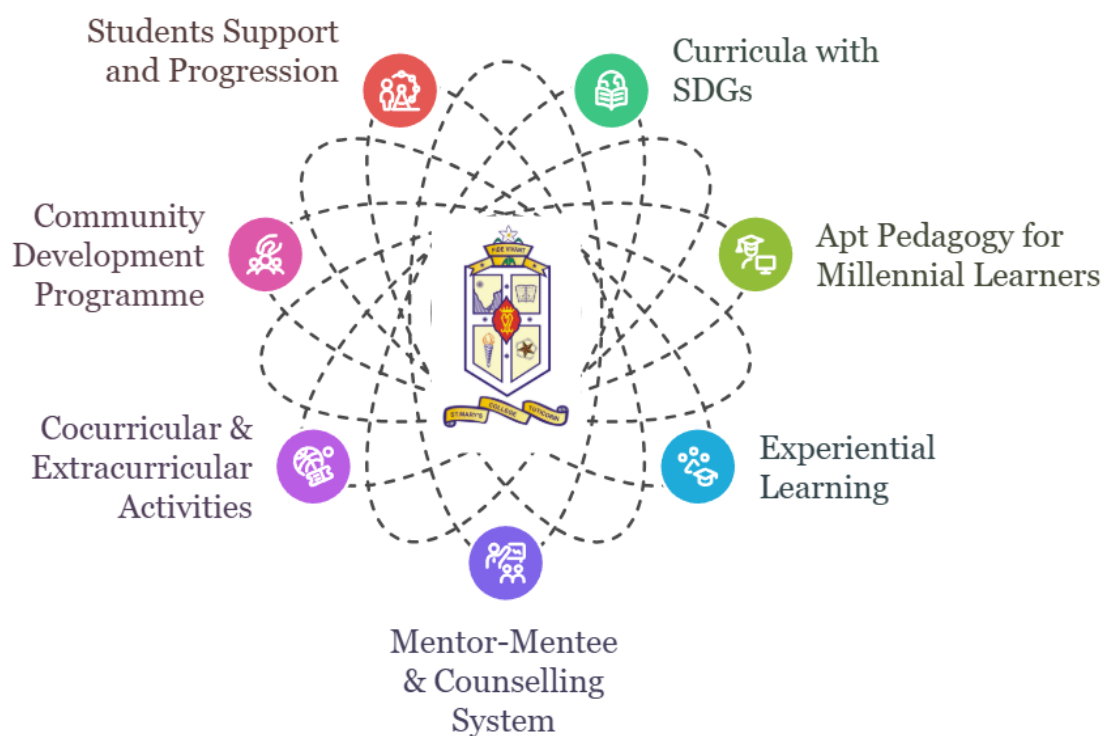
**Criterion VII – Institutional Values and Best Practices**  
**7.3 Institutional Distinctiveness**  
Year: 2018-2023




### 7.3.1 Institutional Distinctiveness

#### Holistic Educational Practices

The institution adheres to the guidelines of the Statutory Regulatory Bodies and frames the curricula of the academic programmes with its vision for whole person education. It has moulded and enriched the life of the first-generation learners through the curricula with its specific focus on Sustainable Developmental Goals, Indian Knowledge System, the apt pedagogy for the millennial learners, the experiential learning methods, the field and the research projects, the development of e-content, the Students' Induction Programmes, the cocurricular and the extracurricular activities, the Community Development Programme, the ethics classes, the mentor-mentee system and the counselling support. The institution has instilled confidence among the students in such a way that they were able to compete with their peer group nation-wide and emerge as toppers in the MOOCs from the SWAYAM NPTEL portal. The OBE curricula offer Core Courses, Core Skill-based Courses, Elective Courses, Ability Enhancement Courses, and Skill Enhancement courses that develop and enhance the capabilities of the students. Sports students are given special coaching, and they won Manonmaniam Sundaranar University Overall Championship 29 times out of 31. The Career Oriented Certificate courses have increased the potentiality of the learners and help the socially and the economically disadvantaged young women secure placement, self-employment, start entrepreneurial ventures and build a successful career, thereby promoting their socio- economic status. Thanks to efforts of the institution towards women empowerment, Thoothukudi ranks third in the Human Development Index in Tamil Nadu.

## Holistic Educational Practices



File Description	Document Upload
OBE Curriculum (Sample)	
First Generation Learners	
Curricula Focused in SDGs	
Indian Knowledge System in Curriculum	
<p>Apt Pedagogy for the Millennial Learners:</p> <ul style="list-style-type: none"> <li>➤ Experiential Learning Method</li> <li>➤ Participative Learning</li> <li>➤ Problem Solving Methods</li> </ul>	  
Community Development Programme	

Ethics	
Christian Doctrines	
Mentor-Mentee System	
Counselling Support	
Career Oriented Certificate courses	
Self-employment & Entrepreneurial Ventures	

*Lewis Rose*

**Principal**

**St. Mary's College (Autonomous)  
Theothukudi-628 001.**